

University of Toronto
Department of Economics



Working Paper 520

Ranking Alternative Non-Combinable Prospects: A Stochastic
Dominance Based Route to the Second Best Solution

By Gordon Anderson and Teng Wah Leo

October 20, 2014

Ranking Alternative Non-Combinable Prospects: A Stochastic Dominance Based Route to the Second Best Solution

Gordon Anderson^{*†} Teng Wah Leo[‡]
University of Toronto St. Francis Xavier University

23 September 2014

*Many thanks for very helpful comments to Michael Smart, Jean-Yves Duclos, James Foster and Alain Trannoy, and to the Summer Workshop in Economics at the University of Toronto, and to the Advances in Stochastic Dominance for Welfare Analysis Conference in Clermont-Ferrand, September 17-18.

[†]Department of Economics, University of Toronto. Email Address: anderson@chass.utoronto.ca

[‡]Department of Economics, St. Francis Xavier University. Email Address: tleo@stfx.ca

Abstract

The problem considered here is that of dealing with the “incompleteness” property of Stochastic Dominance Orderings by quantifying the extent to which distributions differ when there is no dominant distribution at a given order. For example consider a policymaker’s choice problem when facing a set of distinct, non-combinable policy options. When policies are not combinable, the classic comparative static or first best solution to the choice problem is not available. The approach proposed here is an elaboration of a technique employed in the optimal statistical testing literature. It is supposed that policies could be combined so that the ideal first best “stochastically dominant” optimal envelope policy outcome is constructed under the policymaker’s given imperative. Then the second best policy whose outcome most closely approximates this ideal is selected by employing a statistic that measures proximity of alternative policies to that ideal. The statistic is shown to obey an Independence of Irrelevant Alternatives proposition. The paper concludes with 3 illustrative examples of its use.

1 Introduction

A cornerstone in the advance of expected utility and prospect based choice theory when considering an aggregate or expected utility objective¹, has been the use of stochastic dominance criteria (modified in the case of prospect theory) to establish the unambiguous superiority of one outcome distribution over another. Predicated upon the nature of preferences, it provides a set of conditions which the preferred outcome distribution associated with a particular state of the world should satisfy relative to its competitor state. The technique has a wide range of applications, yet in spite of a well-developed theory for public policy applications (Lefranc et al. 2008, 2009, and Moyes and Shorrocks 1994), it is seldom used in practice for basically two reasons. Firstly at low orders of dominance, the method only provides an incomplete ordering (comparisons are not always conclusive). Secondly the method does not yield a measure of “by how much one policy (or portfolio) is better than another” for policymakers (or investors) to hang their hats on in the choice process. The absence of a conclusive comparison leaves the decision maker with no basis for choosing between alternative policies, or tools for assessing progress toward a policy goal. Hopefully the statistics proposed here will fill that void.

Though until very recently² they have received little attention in the public policy field, these practical difficulties associated with employing stochastic dominance techniques have long been recognized in the finance literature. As long ago as 1970, the conventional second order stochastic dominance criterion appropriate for risk averse actors (Rothschild and Stiglitz 1970) was acknowledged by the same authors (Rothschild and Stiglitz 1971) to have no obvious comparative statics properties³. That literature responded to this concern with the introduction of an alternative form of dominance, namely “central dominance”, characterizing “greater central riskiness” (Gollier 1996). Central Dominance, which is neither stronger nor weaker than second order stochastic dominance, characterizes the necessary and sufficient conditions under which a change in risk changes the optimal

¹Kolm (1966), Atkinson (1987), Foster and Shorrocks (1988), Rothschild and Stiglitz (1970), and Kahneman and Tversky (1979)

²See unpublished presentation “Stochastic Dominance and Completeness” by James Foster on Advances in Stochastic Dominance for Welfare Analysis Conference website, <http://www.ferdi.fr/en/node/1601>, Clermont-Ferrand, September 17-18 2014”

³They demonstrated that an increase in risk characterized by 2nd order dominance does not necessarily induce all agents to reduce holdings of the risky asset.

value of an agent's decision variable in a predictable fashion for all risk-averse agents⁴. An important feature of this analysis is that the decision variable is continuously related to the risk measure⁵, so that incremental changes in the decision variable can be contemplated as a consequence of incremental changes in risk. However, the notion of Central Dominance has not yet found expression in the wellbeing policy literature (for an exception see Chuang et al. (2013)), probably because in many situations policy alternatives are generally not continuously connected in the manner that a convex combination of a risky and risk free asset can be contemplated in the portfolio problem⁶. Rather, policy alternatives are a collection of distinct, non-combinable policies or prospects, and the choice problem is that of picking one of them. In these circumstances, where a variety of alternative policy outcomes is being contemplated (usually in terms of the income distributions they each imply), a collection of pairwise dominance comparisons will have to be made without recourse to the comparative static feature that the notion of central dominance provides.

While much can be learned about the relative status of alternative policy outcomes by considering them under different orders of dominance comparison, the partial ordering nature of the technique frequently renders the comparisons inconclusive. In fact successive orders of dominance comparison attach increasing importance (weight) to lower values of the income variable in question, so that increasing orders of dominance may be construed as reflecting “successively increasing degrees of concern for the poor” policy imperatives that confront a policymaker. The usual practice in the empirical wellbeing literature is to compare alternative outcome distributions (usually income size distributions) at successive orders of dominance, until dominance at a given order is established. Unfortunately in terms of a collection of pairwise comparisons, this can be a complicated and lengthy process which is frequently impractical, and sometimes fails to yield a definitive conclusion (hence the lack of its use).

Here indices are proposed for measuring the extent to which one policy is “better” than another within the context of a specific dominance class, the choice of which reflects the particular imperative confronting the policymaker. Conceptually the index is based

⁴Chuang et al. (2013) have developed tests for Central dominance.

⁵The risk free–risky asset mix parameter in the case of the portfolio problem or the tax parameter(s) in a public choice problem.

⁶Central Dominance could for example be employed in examining a revenue neutral redistributive tax policy, which is some convex combination of lump sum and progressive tax.

upon an approach taken in the statistics literature⁷ to choosing from a finite collection of alternative tests, on the basis of the eyeballed proximity of each test's power function to the envelope of the set of available power functions. The envelope reflects the maximal power that could be obtained if the best bits of each test could be notionally combined. So here alternative policy options are considered in the context of a dominance class determined by the policymaker's imperative. The stochastically dominant envelope of policy consequences at the given order of dominance is constructed, so that a measure of the proximity to this envelope for each of the policy options can be calculated. The policy option most proximate to this dominating envelope, i.e. the one with the smallest proximity measure is to be preferred. The result is a complete ordering of available policy alternatives at any given order of dominance comparison, yielding a partial resolution to the incompleteness problem with dominance comparisons akin to the classic second best solution when the first best option (the combination of policies) is not available (Lipsey and Lancaster (1956-1957)).

In the following, Section 2 outlines the relationship between stochastic dominance criteria, wellbeing classes and the notion that a policymaker may want to make a policy choice in the context of an imperative associated with a particular wellbeing class. In Section 3 the indices appropriate for making such choices are developed. Section 4 exemplifies the technique in three scenarios. Firstly, using a sample of weekly pre-tax incomes drawn from the Canadian Labour Force Survey for January 2012, as the basis for three non-combinable alternative revenue neutral policies from which a choice has to be made. Secondly, in examining the proximity of the attainment outcomes of circumstance classes in an equality of opportunity exercise based on a PISA data set for Germany, to assess the progress of equality of opportunity over a span of years in that country. Finally, to illustrate the use of the index in a multi-dimensional framework, a comparison of the relative wellbeing of the African Continent with the Rest of The World over the period 1990 -2005 is performed.

⁷See for example Ramsey (1971), Juhl and Xiao (2003), Omelka (2005), and Anderson and Leo (2014).

2 Stochastic Dominance, Wellbeing Classes and the Policymaker's Imperative

The notion of stochastic dominance was developed as a criteria for choosing between two potential distributions of a random variable x (usually income, consumption or portfolio returns) in order to find the distribution which maximizes $\mathbf{E}(U(x))$ based upon the properties of the function $U(x)$ ⁸, where $U(x)$ represents a felicity function of agents in a society under the income size distribution of x (Levy (1998) provides a summary). The technique yields a decision as to which is the preferred distribution at some specification of $U(x)$, where successively restrictive specifications of $U(x)$ require successively higher orders of dominance comparison. Since dominance at lower orders of comparison implies dominance at higher orders of comparison, the practice is to start comparison at the first order, and making comparison at successively higher orders until an unambiguous decision is reached.

Working with $U(x)$, let x be continuously defined over the domain $[a, b]$, and two alternative states defined by density functions $f(x)$ and $g(x)$ describing the distribution of x across agents in those states. The family of Stochastic Dominance techniques address the issue: “which state is preferred if the objective is the largest $\mathbf{E}(U(x))$?”. Formally, when the derivatives of $U(x)$ are such that $(-1)^{i+1} \frac{d^i U(x)}{dx^i} > 0$, for $i = 1, \dots, J$, a sufficient condition for:

$$\mathbf{E}_f[U(X)] - \mathbf{E}_g[U(X)] = \int_a^b U(x)(dF - dG) \geq 0 \quad (1)$$

is given by the condition for the dominance of distribution G by F at order $j = 1, 2, \dots, J$,

⁸Sometimes poorness or poverty indices $P(x)$ are studied (Atkinson 1987) in which case $U(x) = -P(x)$.

which is⁹¹⁰:

$$F_j(x) \leq G_j(x) \quad \forall x \in [a, b] \quad \text{and} \quad F_j(x) < G_j(x) \quad \text{for some } x \in [a, b] \quad (2)$$

where : $F_i(x) = \int_a^x F_{i-1}(z)dz$ and $F_0(x) = f(x)$

Essentially the condition requires that the functions $F_j(x)$ and $G_j(x)$ not cross, so that the dominating distribution is “unambiguously” below the other. It will be useful for the subsequent discussion to note that $F_i(x)$ (or equivalently $G_i(x)$) may be rewritten in incomplete moment form as:

$$F_i(x) = \frac{1}{(i-1)!} \int_0^x (x-y)^{i-1} dF(y) \quad (3)$$

An important notion regarding dominance relations in what follows is that dominance at order h implies dominance at all orders $h' > h$, and a useful lemma in Davidson and Duclos (2000) is that if F first order dominates G over some region $(-\infty, a)$ then F will dominate G over the whole range of x at some higher order. Thus the practice has been to seek the order at which dominance of one distribution over the other is achieved, for such

⁹The intuition for how the result is arrived at is as follows:

For

$$E_f(U(X)) - E_g(U(X)) = \int_a^b U(x)(dF - dG)$$

where $U(x)$ has alternating signed derivatives up to order J with $U' > 0$. Integration by parts yields:

$$E_f(U(X)) - E_g(U(X)) = (\text{Sequence of non-negative terms}) + (-1)^J \int_a^b \frac{\partial^J U(x)}{\partial x^J} \int_a^b (G_{J-1}(x) - F_{J-1}(x)) dx$$

¹⁰Formally these are the conditions appropriate for risk averse agents (Levy 1998). If agents are “risk loving”, successive derivatives of $U(x)$ would all be positive resulting in conditions of the form:

$$F_J^+(x) \leq G_J^+ \quad \forall x \in [a, b]$$

and $F_J^+(x) < G_J^+$ for some $x \in [a, b]$

where $F_i^+ = \int_x^b F_{i-1}^+(z)dz$, and $F_0^+(x) = f(x)$ These conditions are also used in prospect theory (Levy 1998), and can be examined in the context of the standard conditions for transformed $x^* = -x$ (Anderson 2004). Interestingly in this case successive orders of dominance have the interpretation of increasing concern for the rich since outcomes of the rich get increasing weight in higher order comparisons.

a comparison is unambiguous at that order of dominance. There is also the implication that at a sufficiently high order of dominance the ordering will be complete rather than partial.

From (2) it may be seen that the dominating distribution is the preferred distribution, reflecting as it does the desire for greater expected $U(x)$. However, as can be seen from (3) increasing orders of dominance attach increasing weight to lower values of x in the population distribution. Thus successively higher orders of dominance can be interpreted as reflecting higher orders of concern for the “poor” end of the distribution. Following Foster and Shorrocks (1988) this permits the interpretation of various forms of dominance as follows¹¹:

- $U_{i=1}$, which only requires $\frac{dU(x)}{dx} > 0$, and yields a 1st order dominance rule, is referred to as *Utilitarian* societal preference, and is really an expression of preference for more of x without reference to the spread of x . In the context of the dominance relation, the weight attached to each value of x in the population distribution is the same. However in the cumulative distribution, heuristically the first increment of $f(x)$ is counted at every value of x , the second increment of $f(x)$ is counted at every value of x except the first, the third increment of $f(x)$ is counted at every value of x except the first and second In terms of the policymaker’s imperative, she would be indifferent to revenue neutral transfers between agents.
- $U_{i=2}$, which requires $\frac{dU(x)}{dx} > 0$, $\frac{d^2U(x)}{dx^2} < 0$, and yields a 2nd order dominance rule, is referred to as *Daltonian* societal preference, and is an expression of preference for more x with weak preference for reduced spread. On the margin, for two distributions with equal means but different variances (whose cumulative distribution will cross, thus contradicting the 1st order dominance criteria), the one with the smallest variance will be preferred. In the context of the dominance relation formula, the weight attached to each value of x in the population distribution decreases as x increases (heuristically the first increment of $f(x)$ is counted twice at every value of x , the second increment of $f(x)$ is counted twice at every value of x except the first, the third increment of $f(x)$ is counted twice at every value of x except the first and second, . . . , and in terms of x , equation (3) reveals the increments are units of x).

¹¹The comparison procedures have been empirically implemented in several ways, see for example Anderson (1996, 2004), Barrett and Donald (2003), Davidson and Duclos (2000), Linton et al. (2005), Knight and Satchell (2008), and McFadden (1989).

In terms of the policymaker's imperative she would have a preference for revenue neutral transfers from rich agents to poor agents.

- $U_{i=3}$, which requires $\frac{dU(x)}{dx} > 0$, $\frac{d^2U(x)}{dx^2} < 0$ and $\frac{d^3U(x)}{dx^3} > 0$, yields a 3rd order dominance rule, and is an expression of preference for more, with a weak preference for reduced spread especially at the low end of the distribution. In the context of the dominance relation, the weight attached to each value of x in the population distribution decreases at an even faster rate as x increases (heuristically the first increment of $f(x)$ is counted thrice at every value of x , the second increment of $f(x)$ is counted thrice at every value of x except the first, the third increment of $f(x)$ is counted thrice at every value of x except the first and second, \dots , and in terms of x , equation (3) reveals the increments are squares of units of x). In terms of the policymaker's imperative she would have a preference for revenue neutral transfers from rich agents to poor agents, and the preference would be stronger the poorer the agent.

...

- U_∞ or infinite order dominance is referred to as *Rawlsian* societal preference, since it attaches infinite weight to the poorest individual, and can be examined in the context of the relative incomes of the poorest individuals in two equally populated societies. Essentially the outcome distribution which yields the best outcome for the poorest individual is the one that is chosen.

With this in mind, the policymaker is lead to contemplate a particular order of dominance (choice of i) in order to reflect the imperative she confronts, in terms of the degree of concern for the poorer agents in a society. Thus if the policymaker was indifferent as to where in the distribution of incomes revenue neutral transfers were made, she would consider 1st Order Dominance comparisons. If on the other hand the policymaker deems it politic to give added weight to the concerns of the poor, policy comparisons should be conducted in terms of higher orders of dominance (values of i greater than 1) of the distributions of policy outcomes. In this context, it may be that no policy dominates at the chosen level of concern. However the policymaker could choose the policy which gets closest to the envelope of alternative policy outcomes, at the appropriate level of integration (i) which reflects the imperative she confronts, if indices of proximity to the envelope were available.

3 The Comparison Indices

Suppose we are to contemplate a collection of wellbeing distributions $G(x)$, $H(x)$, $J(x)$, \dots , $K(x)$, which are the consequence of alternative policy measures, where for convenience $x \in [0, \infty)$. In the context of wellbeing comparisons, we are led to consider a collection of pairwise comparisons within the family of dominance criteria where j 'th order dominance is of the form given in (2) above. Anderson (2004) interpreted dominance between F and G at a particular order as a measure of the degree of separation between the distributions at that order, and the area between the two curves provides a very natural measure of the magnitude of the separation. Furthermore, when G dominates F at the j 'th order, and given μ^j is a location measure of x such as the mean, median or modal value of x , note then that:

$$\mathcal{PB}_j = \frac{-1}{\mu^j} \int_0^{\infty} [G_j(z) - F_j(z)] dz \quad (4)$$

provides a standardized measure of such a separation or wellbeing excess of G over F , where the metric of the unstandardized measure is related to the units of μ^j , making this a unit free measure. However such an index only works if G dominates F at this order. What if there is no dominant policy at a given order?

Suppose the policymaker's imperative is *utilitarian*, it may well be that there is no 1st order dominant policy in the collection. Consider the lower frontier or envelope of all distributions $G(x)$, $H(x)$, $J(x)$, \dots , $K(x)$ in the collection given by $\mathcal{LE}(x) = \min_x \{G(x), H(x), J(x), \dots, K(x)\}$. Thus in so doing, effectively the "best policy" of each point x has been selected to produce the best possible synthetic policy over the whole range of x , if all policies could be combined. Obviously $\mathcal{LE}(x)$ would dominate all distributions $G(x)$, $H(x)$, $J(x)$, \dots , $K(x)$ at the first order and would thus, if it existed, be the preferred distribution (Note that if one of the distributions in the collection 1st Order Dominated all of the other distributions, $\mathcal{LE}(x)$ would be equal to it). Proximity to such a distribution would be of interest in evaluating each of the available distributions at the first order imperative. Hence we are led to contemplate,

$$\min_{\mathcal{M}(x)} \mathcal{LEPB}(\mathcal{M}(x)) = -\frac{1}{\mu} \int_0^{\infty} [\mathcal{M}(x) - \mathcal{LE}(x)] dx \quad (5)$$

where $\mathcal{M}(x) = \{G(x), H(x), J(x), \dots, K(x)\}$, since the lowest value of \mathcal{LEPB} represents the closest proximity to the envelope.

If the policymaker's imperative is represented by the j 'th degree dominance criterion, one could contemplate the lower frontier or envelope of all possible j 'th order integrals of the candidate distributions, $G_j(x), H_j(x), J_j(x), \dots, K_j(x)$, which would be $\mathcal{LE}_j(x) = \min\{G_j(x), H_j(x), J_j(x), \dots, K_j(x)\}$. Note that $\mathcal{LE}_j(x)$ would stochastically dominate all distributions $G(x), H(x), J(x), \dots, K(x)$, at the j 'th order and would thus, if it existed, be the preferred distribution at that order¹². Proximity to such a distribution would be of interest in evaluating the available distributions, hence she would be led to contemplate,

$$\min_{\mathcal{M}_j(x)} \mathcal{LEPB}_j(M(x)) = -\frac{1}{\mu_j} \int_0^{\infty} [\mathcal{M}_j(x) - \mathcal{LE}_j(x)] dx \quad (6)$$

where $\mathcal{M}_j(x) = \{G_j(x), H_j(x), J_j(x), \dots, K_j(x)\}$.

The question arises as to whether this statistic possesses the ‘‘independence of irrelevant alternatives’’ property. The answer is yes, in the sense that if one policy is strictly dominated by a combination of all other policies in the collection, then it can be considered irrelevant¹³. By definition of the lower envelope, it will not be present anywhere in the constructed \mathcal{LE} , and so will not affect the value of the statistics in any way.

Finally, if a statistical comparison of the indices is required, note that the difference between 2 non-normalized indices, $[\mathcal{LEPB}_j(G_j(x)) - \mathcal{LEPB}_j(H_j(x))]$ for example, may be written as:

$$\int_0^{\infty} [G_j(x) - \mathcal{LE}_j(x)] dx - \int_0^{\infty} [H_j(x) - \mathcal{LE}_j(x)] dx = \int_0^{\infty} [G_j(x) - H_j(x)] dx \quad (7)$$

which can be estimated, and appropriate inference performed following Davidson and Duclos (2000), details of which are outlined in the appendix A.2.

3.1 A Measure of the Relative Merit of Policies

Consider the upper frontier or envelope of all possible j 'th order integrals of the candidate distributions, namely $\mathcal{UE}_j(x) = \max_j\{G_j(x), H_j(x), J_j(x), \dots, K_j(x)\}$, this constitutes

¹²Again note that if one of the distributions j 'th Order Dominated all of the other distributions $\mathcal{LE}_j(x)$ would be equal to it. It is of interest to note that for $j = 1$:

$$\int_0^{\infty} (G(x) - H(x)) dx = \int_0^{\infty} (1 - H(x) - (1 - G(x))) dx = \mu_{H,x} - \mu_{G,x}$$

which can readily be seen to be a difference in means test.

¹³The proof of which is in appendix A.1

the worst that the policy maker could do if she could combine the policies in a bad way. Proximity to $\mathcal{UE}(x)$ is a measure of how bad the chosen policy is and the area between this theoretical outcome (the upper frontier) and the best theoretical outcome (the lower frontier) given by:

$$S_j = \int_0^\infty (\mathcal{UE}_j(x) - \mathcal{LE}_j(x)) dx \quad (8)$$

constitutes a measure of the range of possibilities available to the policy maker. If it is close to 0 it suggests that it really doesn't matter, all policies are very similar in outcome. A measure of the relative merit of policies $M_j(x) = \{G_j(x), H_j(x), J_j(x) \dots, K_j(x)\}$ is:

$$\mathcal{PM}_j = 1 - \frac{\mathcal{LEPB}_j(x)}{S_j} \quad (9)$$

This would be a number between 0 and 1 and provides a complete ordering of policies at the j 'th order of integration or concern for the poor.

4 Three Illustrative Examples

To illustrate these ideas we consider three examples, one from a standard public policy choice literature where the policy maker is confronted with three policy alternatives which yield the same expected return, the other example is drawn from the equality of opportunity literature which has recently employed dominance techniques in examining whether or not the socially just state has been attained. The third is a multidimensional application measuring the the change in the relative disadvantage the continent of Africa has vis-à-vis the Rest of the World in the joint distribution of of life expectancy and GDP per capita.

4.1 Example 1

In the first, we contemplate three alternative non-combinable policies, A , B , and C that yield the same per capita return in terms of expected post-tax income to society. The different policies have different redistributive effects, which will be characterized through different revenue neutral tax policies on the initial distribution, which shall be denoted policy A . Using the results of Moyes and Shorrocks (1994) it is assumed that the effect of policy B is that of a proportionate tax $t_p(x) = t$, where $0 < t < 1$, whose aggregate

proceeds are distributed equally across the population at a level of M per person. The effect of policy C was equivalent to a progressive tax $t_{pr}(x) = t_1 + t_2F(x)$ (where $F(x)$ is the cumulative distribution of $f(x)$, the income size distribution of pre-tax income x , and $0 < t_1 + t_2F(x) < 1$, so that $0 < t_1 < 1$, and $0 < t_2 < 1 - t_1$), and again the aggregate per capita proceeds M is distributed equally across the population. All tax regimes are revenue neutral, which implies that the post-tax income for policy B is $(1 - t)x + M$, and revenue neutrality implies:

$$\int (tx - M)dF(x) = 0 \Rightarrow M = t \mathbf{E}(x) \quad (10)$$

and for policy C , post-tax income will be $(1 - t_1 - t_2F(x))x + M$, with revenue neutrality implying:

$$\int ((t_1 + t_2F(x))x - M)dF(x) = 0 \Rightarrow t_2 = \frac{(M - t_1 \mathbf{E}(x))}{(\int xF(x)dF(x))} \quad (11)$$

The empirical analogues of the policies applied to a random sample of n pre-tax weekly incomes x_i , $i = 1, \dots, n$ (where incomes x are ranked highest 1 to lowest n) drawn from the Canadian Labour Force Survey for January 2012 (wage rate multiplied by usual hours of work per week) would yield post-policy incomes y_i of,

- A : $y_i = x_i$
- B : $y_i = (1 - t)x_i + M$
- C : $y_i = \left[1 - t_1 - t_2 \left(1 - \frac{\text{rank}(x_i)}{n}\right)\right] x_i + M$

Income distributions that are the result of the three policy alternatives are illustrated in figure 1. The sample size was 52,173, the parameters were chosen as $t = 0.5$, $t_1 = 0.3$, and as a consequence $t_2 = 0.2976$, and summary statistics for the three policies are presented in Table 1. All three distributions have the same average income with the dispersion ranking $A > B > C$, all are right skewed with Policy C being the least skewed.

Table 2 reports the dominance relationships between the policies in terms of the maximum and minimum differences between the 1st, 2nd, and 3rd orders of integration of the respective distributions (positive maximums together with negative minimums imply no dominance relationship at that order of integration). As is evident, there are no dominance relationships between the policy outcomes at the 1st order, at the 2nd order A is dominated by both B and C , though there is no dominance relationship between B and

Figure 1: Density Functions of Policy Outcomes

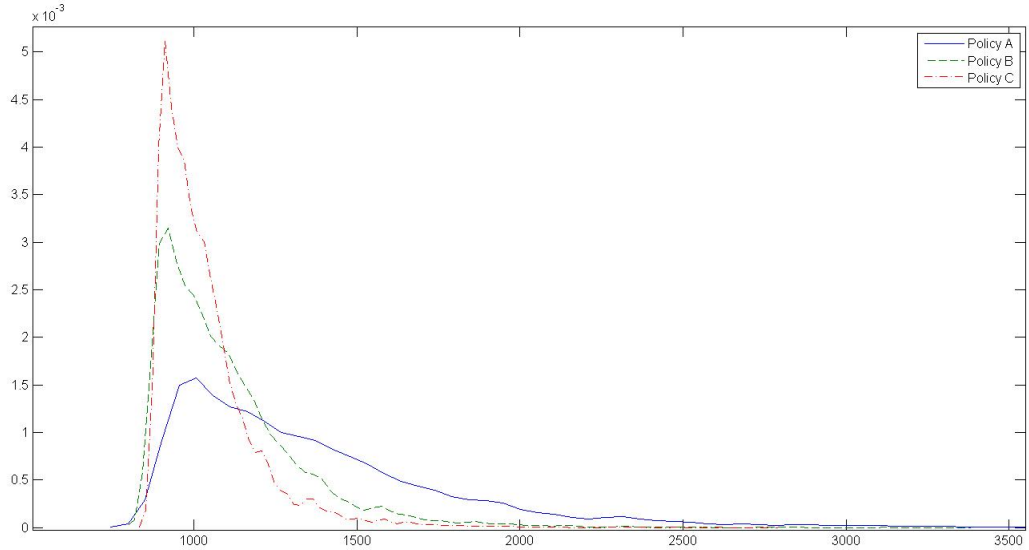


Table 1: Income Distribution Summary Statistics

	Policy A	Policy B	Policy C
Mean Income	836.89	836.89	836.89
Median Income	750.00	793.44	831.73
Standard Deviations	534.41	267.20	205.10
Maximum Income	5769.60	3303.24	2740.27
Minimum Income	4.80	420.84	421.80

C , and at the 3rd order comparison outcome C universally dominates, and will be the envelope of the three distributions at that level of dominance comparison. Note incidentally that if a *Rawlsian*, infinite order dominance, imperative confronted the policymaker, policy C would be the choice since it presents the best outcome for the poorest person. Nonetheless, the primary point here is stochastic dominance’s inability to provide a resolution to the policy choice problem should the policymaker’s imperative be *utilitarian*, or *Daltonian* in nature.

To highlight the merit of this comparison technique, consider the Non-Standardized Policy Evaluation Indices reported in Table 3. Under a *Utilitarian* imperative, Policy A

Table 2: Between Policy Dominance Comparisons ($A \succ_k B$ implies k^{th} order dominance of A over B)

	$A - B$	$A - C$	$B - C$
1 st Order minimum difference	-0.1272	-0.1844	-0.0734
1 st Order maximum difference	0.2359	0.2527	0.1019
	No Dominance	No Dominance	No Dominance
2 nd Order minimum difference	0.0000	0.0000	$-1.9895e^{-12}$
2 nd Order maximum difference	0.1225	0.1531	0.0318
	$B \succ_2 A$	$C \succ_2 A$	No Dominance
3 rd Order minimum difference	0.0000	0.0000	0.0000
3 rd Order maximum difference	0.1529	0.1738	0.0209
	$B \succ_3 A$	$C \succ_3 A$	$C \succ_3 B$

would be chosen (although the magnitudes of each respective policy index suggests that there is very little to choose between the policies at this order of dominance comparison). Under a second order inequality averse imperative, Policy C would be chosen, and under a third order inequality averse imperative, where poorer agents are of greater concern, Policy C would still be chosen (note here the Index is zero because Policy C 's distribution, in being uniformly dominant at the third order over the other distributions, will constitute the lower envelope at that order).

Table 3: Policy Evaluation Indices

	Policy A	Policy B	Policy C
$\mathcal{LEPB}_1(\mathcal{M}(x))$	22.2199 (0.5018)	22.2359 (0.5012)	22.2310 (0.5012)
$\mathcal{LEPB}_2(\mathcal{M}(x))$	25.2379 (0.0000)	3.0398 (0.9003)	$1.4205e^{-10}$ (1.0000)
$\mathcal{LEPB}_3(\mathcal{M}(x))$	140.9837 (0.0000)	17.1928 (0.8822)	0.0000 (1.0000)

Note: Efficiency index of (9) are in parenthesis.

4.2 Example 2

In the second example, we turn to the equality of opportunity literature and seek to provide a means of evaluating progress toward an equality of opportunity outcome. Recently dominance techniques have been applied to equality of opportunity analyses, where absence of dominance (usually of 2nd order) of outcome distributions for circumstance classes is seen as indicating equality of opportunity Lefranc et al. (2008, 2009). In this context the increasing orders of dominance reflect an “equality between the outcome distributions” imperative with increasing weight attached to outcomes at the lower end of the distributions “equalizing upward” rather than “equalizing downward”. Unfortunately all such comparisons reveal is whether or not equality of opportunity has been achieved, they do not provide any evidence of progress or otherwise, toward the Equal opportunity goal. The indices developed here can be used to provide such evidence.

Using Programme for International Student Assessment (PISA) data for German students in 2003 and 2009, we construct an achievement index following Anderson et al. (2011) (ACL) for students who have completed exams in Language, Math and Science, and a similar ACL circumstance index for each student based upon its family type, parental income, and education. Three equal sized inheritance classes were established based upon the child’s circumstance index, and normal distributions were fitted to outcomes of the children in the respective inheritance classes.

Table 4: Summary Statistics of Achievement Index by Inheritance Class

	Class 1	Class 2	Class 3
	Low Inheritance	Middle Inheritance	High Inheritance
2003 Mean Achievements	0.0965	0.1692	0.2392
(Standard Deviations)	(0.0300)	(0.0141)	(0.0377)
2009 Mean Achievements	0.0764	0.1232	0.1799
(Standard Deviations)	(0.0204)	(0.0110)	(0.0244)

From Table 4, under the assumption of the normality of the child outcome distributions, note that child outcomes of the higher circumstances classes 1st Order Dominate child outcomes of lower circumstance classes in every case, which rejects the notion of equality of opportunity for both time periods. But the question is, whether there is a

sense that things have improved in terms of an equality of opportunity goal in Germany over the period 2003-2009? Are we in some sense closer to the equality of opportunity paradigm. Table 5 presents the difference in the indices between the various inheritance classes for 1st, 2nd and 3rd order comparisons for the years 2003 and 2009.

Table 5: Comparison Indices (Equation (4)) Across Inheritance Class by Year

	Low vs. Middle Inheritance Classes	Low vs. High Inheritance Classes	Middle vs. High Inheritance Classes
2003 1 st Order Comparison	0.2049	0.4022	0.1972
2003 2 nd Order Comparison	0.0469	0.0753	0.0284
2003 3 rd Order Comparison	0.0046	0.0063	0.0018
2009 1 st Order Comparison	0.1922	0.4246	0.2324
2009 2 nd Order Comparison	0.0306	0.0540	0.0233
2009 3 rd Order Comparison	0.0021	0.0031	0.0010

Note: The comparison for Low vs. High may be obtained by summing up the comparisons for Low vs. Middle, and Middle vs. High, since $\int (f(x) - g(x)) dx + \int (g(x) - h(x)) dx = \int (f(x) - h(x)) dx$

Under 1st order comparisons the results are ambiguous. By comparing the differences across the two years it appears that low inheritors have closed the gap on middle inheritors, however the poor and middle inheritors' gap with respect to upper inheritors had widened. On the other hand, results based on 2nd and 3rd order comparisons are clear, all lower level inheritors have gained on higher level inheritors in every case over the two comparison years. That is to say when the low outcomes in each inheritance class are weighted more heavily, clear advances have been made over the 6 year period.

4.3 Example 3

To illustrate the use of the statistic in a multidimensional framework, equation (4) is used as a wellbeing measure (in essence it computes the volume between the surfaces). Drawing from a convergence-polarization study of African nations versus the rest of the world (Anderson et al. 2012), comparing the GDP per capita and life expectancy of nations over the period 1990-2005, the first and second order dominance comparisons for the two groups

of nations for the comparison years are presented in figures 2 through 5 (The statistics in table 6 are the negative of the integrals of the surfaces in the corresponding diagrams). Observe from table 6, that the rest of the world distribution first order stochastically dominates Africa in both periods so that the index corresponds to a measure of Africa's wellbeing deficiency vis-à-vis the rest of the world. Since the Rest of the World dominance relation is first order, it will also be Second Order as the table indicates. Note that in both cases the deficiency has increased over the period reflecting the fact that Africa and the Rest of the World have polarized.

Table 6: Between Rest of the World & Africa 2 Dimensional 1st Order Dominance Comparisons by Year ($F_{Rest} \succ_1 F_{Africa}$ implies 1st Order Dominance of *Rest* over *Africa*)

	1990	2005
	$F_{Rest} \succ_1 F_{Africa}$	$F_{Rest} \succ_1 F_{Africa}$
1 st Order Minimum Difference	-0.6528	-0.8201
1 st Order Maximum Difference	0.0000	0.0000
	$F_{Rest} \succ_1 F_{Africa}$	$F_{Rest} \succ_1 F_{Africa}$
Volume Between the Surfaces	$6.0307e^3$	$1.2408e^4$
2 nd Order Minimum Difference	-12.9597	-15.4888
2 nd Order Maximum Difference	0.0000	0.0000
	$F_{Rest} \succ_2 F_{Africa}$	$F_{Rest} \succ_2 F_{Africa}$
Volume Between the Surfaces	$1.0852e^5$	$2.2466e^5$

Figure 2: 1990 1st Order Dominance, African Continent vs. the Rest

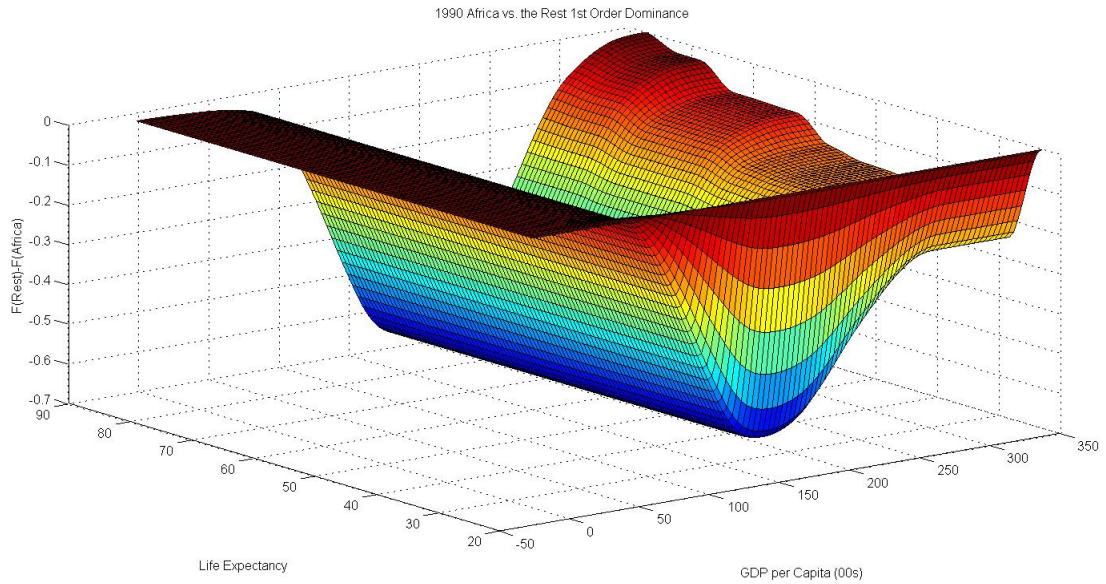


Figure 3: 2005 1st Order Dominance, African Continent vs. the Rest

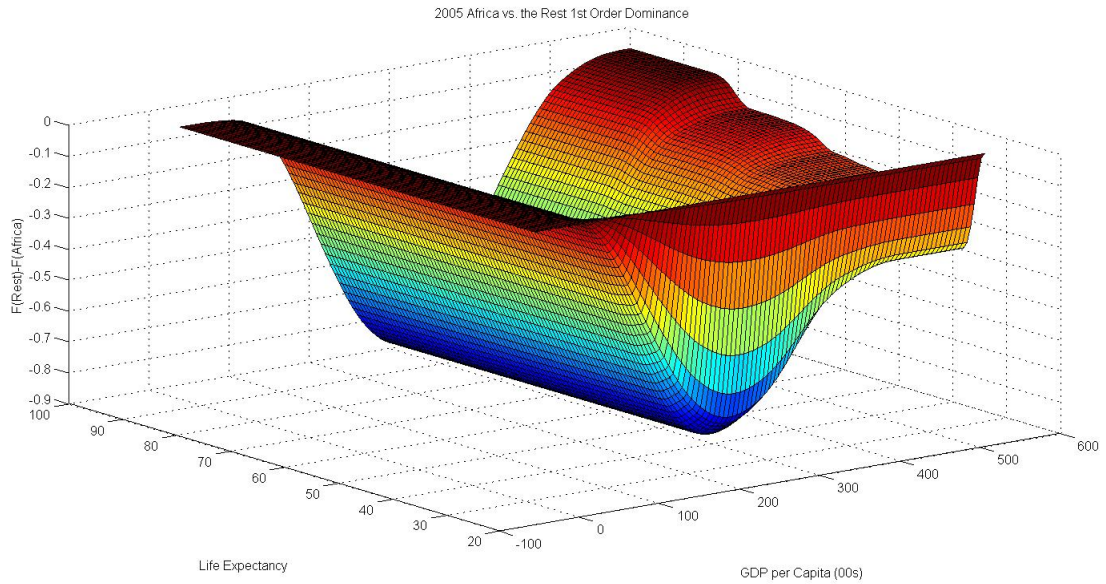


Figure 4: 1990 2nd Order Dominance, African Continent vs. the Rest

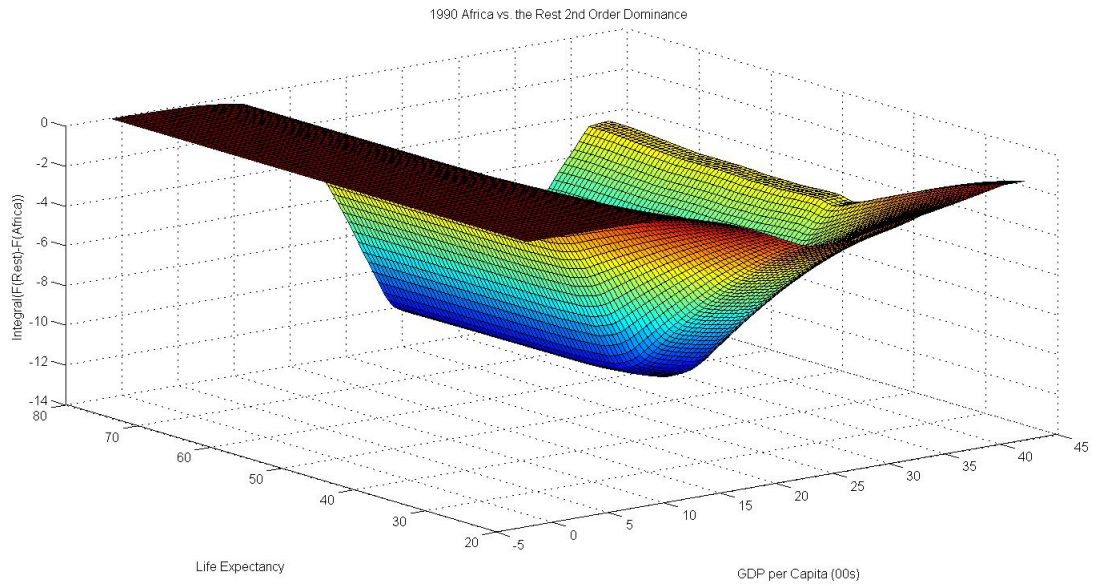
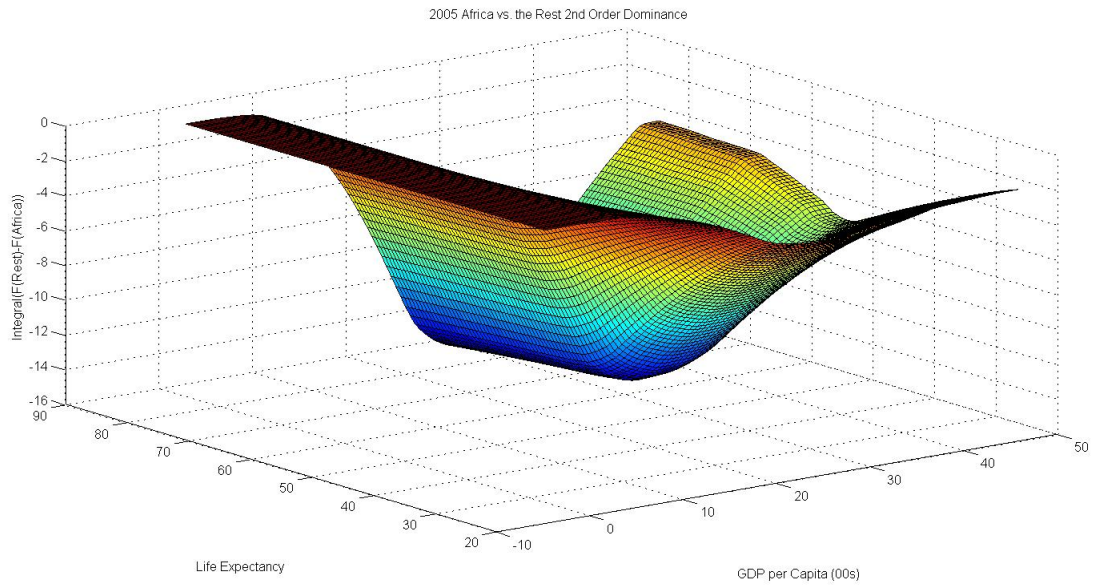


Figure 5: 2005 2nd Order Dominance, African Continent vs. the Rest



5 Conclusions

The difficulties in applying Stochastic Dominance Techniques in the realm of public policy are twofold. Generally the technique only offers a partial ordering, and furthermore it never yields the policy maker a number by which she can assess “by how much” one policy is better than another. This presents a severe problem when alternative policies are not combinable so that the first best solution is not available. Here measures or indices are proposed which are founded on stochastic dominance principles, and which provide the policymaker with a measure of how much better one policy is than another in the context of the particular distributional imperative she confronts. The measure provides a complete ordering at any level of comparison deemed appropriate by the policymaker, and it is shown to possess an Independence of Irrelevant Alternatives property. Three distinct examples on redistributive policy choice, equality of opportunity comparisons, and international wellbeing comparisons illustrate the use of the statistic.

References

- Anderson, G. (1996). Nonparametric Tests for Stochastic Dominance in Income Distributions. *Econometrica*, 64, 1183–1193.
- Anderson, G. (2004). Toward an Empirical Analysis of Polarization. *Journal of Econometrics*, 122, 1–26.
- Anderson, G., Crawford, I., and Leicester, A. (2011). Welfare Rankings from Multivariate Data, a Nonparametric Approach. *Journal of Public Economics*, 95(34), 247–252.
- Anderson, G. and Leo, T. W. (2014). A Note on a Family of Criteria for Evaluating Test Statistics. *Communications in Statistics - Theory and Methods*. Forthcoming.
- Anderson, G., Linton, O., and Leo, T. W. (2012). A Polarization-Cohesion Perspective on Cross-Country Convergence. *Journal of Economic Growth*, 17(1), 49–69.
- Atkinson, A. (1987). On the Measurement of Poverty. *Econometrica*, 55, 749–764.
- Barrett, G. and Donald, S. (2003). Consistent Tests for Stochastic Dominance. *Econometrica*, 71, 71–104.

- Chuang, O.-C., Kuan, C.-M., and Tzeng, L. Y. (2013). Testing for Central Dominance: Method and Applications. Mimeo National Taiwan University.
- Davidson, R. and Duclos, J.-Y. (2000). Statistical Inference for Stochastic Dominance and for the Measurement of Poverty and Inequality. *Econometrica*, 68, 1435–1464.
- Foster, J. and Shorrocks, A. (1988). Poverty Orderings. *Econometrica*, 56, 173–177.
- Gollier, C. (1996). The Comparative Statics of Changes in Risk Revisited. *Journal of Economic Theory*, 66, 522–535.
- Juhl, T. and Xiao, Z. (2003). Power Functions and Envelopes for Unit Root Tests. *Econometric Theory*, 2, 240–253.
- Kahneman, D. and Tversky, A. (1979). Prospect Theory: An Analysis of Decision Under Risk. *Econometrica*, 47, 263–291.
- Knight, J. and Satchell, S. (2008). Testing for Infinite Order Stochastic Dominance with Applications to Finance, Risk and Income Inequality. *Journal of Economics and Finance*, 32, 35–46.
- Kolm, S. (1966). The Optimal Production of Social Justice. In *Colloques Internationaux du Centre National de la Recherche Scientifique, 2-9 Septembre 1966*.
- Lefranc, A., Pistoiesi, N., and Trannoy, A. (2008). Inequality of Opportunity vs. Inequality of Outcomes: Are Western Societies All Alike? *Review of Income and Wealth*, 54(4), 513–546.
- Lefranc, A., Pistoiesi, N., and Trannoy, A. (2009). Equality of Opportunity and Luck: Definitions and Testable Conditions, with an Application to Income in France. *Journal of Public Economics*, 93(11-12), 1189–1207.
- Levy, H. (1998). *Stochastic Dominance: Investment Decision Making under Uncertainty*. Boston: Kluwer Academic Publishers.
- Linton, O., Maasoumi, E., and Whang, Y. (2005). Consistent Testing for Stochastic Dominance under General Sampling Schemes. *Review of Economic Studies*, 72, 735–765.

- Lipsey, R. G. and Lancaster, K. (1956-1957). The General Theory of Second Best. *The Review of Economic Studies*, 24(1), 11–32.
- McFadden, D. (1989). Testing for Stochastic Dominance. In T. B. Fomby and T. K. Seo (Eds.), *Studies in the Econometrics of Uncertainty*. New York: Springer-Verlag.
- Moyes, P. and Shorrocks, A. (1994). Transformations of Stochastic Orderings. In W. Eichorn (Ed.), *Models and Measurement of Welfare and Inequality*. New York: Springer-Verlag.
- Omelka, M. (2005). The Behaviour Of Locally Most Powerful Tests. *Kybernetika*, 41, 699–712.
- Ramsey, F. (1971). Small Sample Power Functions for Non-parametric Tests of Location in the Double Exponential Family. *Journal of the American Statistical Association*, 66, 149–151.
- Rothschild, M. and Stiglitz, J. (1970). Increasing risk: I. A definition. *Journal of Economic Theory*, 2, 225–243.
- Rothschild, M. and Stiglitz, J. (1971). Increasing risk: II. Its Economic Consequences. *Journal of Economic Theory*, 3, 66–84.

A Appendix

A.1 Independence of Irrelevant Alternatives

Here the notion of Independence of Irrelevant Alternatives (IIA) employed is that the introduction of an irrelevant alternative should not change the ordering of all other alternatives. Let the set of policies considered at the j 'th level of dominance be

$$\{G_j(x), H_j(x), J_j(x), \dots, K_j(x)\}$$

and suppose $G_j(x)$ is the irrelevant alternative so the ordering of $H_j(x), J_j(x), \dots, K_j(x)$ remains unchanged when G is included from consideration.

Proposition 1 $G_j(x)$ is an irrelevant alternative if and only if

$$G_j(x) \geq \min_x \{H_j(x), J_j(x), \dots, K_j(x)\}$$

with strict inequality holding somewhere¹⁴

Necessity:

Suppose not, then for $G_j(x) < \min_x \{H_j(x), J_j(x), \dots, K_j(x)\}$ for some x , it would be the case that $\mathcal{LE}(G_j(x), H_j(x), J_j(x), \dots, K_j(x)) < \mathcal{LE}(H_j(x), J_j(x), \dots, K_j(x))$ for some x , and the ordering of $H_j(x), J_j(x), \dots, K_j(x)$ could be changed, contradicting the irrelevance condition.

Sufficiency:

Since $G_j(x) \geq \min_x \{H_j(x), J_j(x), \dots, K_j(x)\}$ ($= \mathcal{LE}(H_j(x), J_j(x), \dots, K_j(x))$) for all x , then

$$\begin{aligned} \mathcal{LE}(G_j(x), H_j(x), J_j(x), \dots, K_j(x)) &= \min_x \{G_j(x), H_j(x), J_j(x), \dots, K_j(x)\} \\ &= \min_x \{H_j(x), J_j(x), \dots, K_j(x)\} \\ &= \mathcal{LE}(H_j(x), J_j(x), \dots, K_j(x)) \quad \forall x. \end{aligned}$$

And

$$\mathcal{LEPB} = \int_0^\infty (M_j(x) - \mathcal{LE}(x))$$

for $M_j(x) = \{H_j(x), J_j(x), \dots, K_j(x)\}$ can be computed independently of G leaving the ordering of $H_j(x), J_j(x), \dots, K_j(x)$ unchanged.

Corollary 1 If G is stochastically dominated at the j 'th order by any other single policy from $H_j(x), J_j(x), \dots, K_j(x)$, it will be an irrelevant policy at the j 'th order.

Proof. Suppose H dominates G at the j 'th order, then since

$$\begin{aligned} H \succ_j G &\Rightarrow \min_x \{G_j(x), H_j(x)\} = H_j(x) \\ &\Rightarrow \min_x \{G_j(x), H_j(x), J_j(x), \dots, K_j(x)\} = \min_x \{H_j(x), J_j(x), \dots, K_j(x)\} \end{aligned}$$

■

Corollary 2 If G is stochastically dominated at the j 'th it is an irrelevant policy at all higher orders of Dominance.

¹⁴Essentially, this requires that policy G be stochastically dominated at the j 'th order by the lower envelope of all other policies, thus the lower envelope can be formed without resort to G .

A.2 Estimating difference in \mathcal{LEPB} of Equation 7

Following Davidson and Duclos (2000), the i 'th order stochastic dominance criteria are based upon (3) which may be estimated from a random sample of y 's by:

$$\widehat{F}_i(x) = \frac{1}{N(i-1)!} \sum_{j=1}^N (x - y_j)^{i-1} \mathbb{I}(y_j < x)$$

Here $\mathbb{I}(s)$ is the indicator function which equals one if s is true, and zero otherwise. For a sequence of values x_1, x_2, \dots, x_K , the estimates of the vector $[F_i(x_1), F_i(x_2), \dots, F_i(x_K)]'$ can be shown to be asymptotically normally distributed i.e.

$$\begin{pmatrix} \widehat{F}_i(x_1) \\ \widehat{F}_i(x_2) \\ \vdots \\ \widehat{F}_i(x_K) \end{pmatrix} \sim N \left(\begin{pmatrix} F_i(x_1) \\ F_i(x_2) \\ \vdots \\ F_i(x_K) \end{pmatrix}, \begin{pmatrix} C_i(x_1, x_1) & C_i(x_1, x_2) & \dots & C_i(x_1, x_K) \\ C_i(x_2, x_1) & C_i(x_2, x_2) & \dots & C_i(x_2, x_K) \\ \vdots & \vdots & \ddots & \vdots \\ C_i(x_K, x_1) & C_i(x_K, x_2) & \dots & C_i(x_K, x_K) \end{pmatrix} \right)$$

where the covariance terms:

$$C_i(x_j, x_k) = \mathbf{E} \left(\left(\widehat{F}_i(x_j) - F_i(x_j) \right) \left(\widehat{F}_i(x_k) - F_i(x_k) \right) \right)$$

for $j, k = \{1, 2, \dots, K\}$, may be estimated as:

$$\widehat{C}_i(x_j, x_k) = \frac{1}{[N(i-1)!]^2} \sum_{n=1}^N (x - y_n)^{i-1} \mathbb{I}(y_n \leq x) (z - y_n)^{i-1} \mathbb{I}(y_n \leq z) - N^{-1} \widehat{F}_i(x) \widehat{F}_i(z)$$

When distributions $f(\cdot)$ and $g(\cdot)$ are independently sampled, interest centers on the vector of differences $\mathbf{F} - \mathbf{G} = [F_i(x_1) - G_i(x_1), F_i(x_2) - G_i(x_2), \dots, F_i(x_k) - G_i(x_k)]'$, which under the null of equality is jointly distributed as $N(0, C_{i,f} + C_{i,g})$, where $C_{i,f}$ and $C_{i,g}$ are respectively the covariance matrices under f and g ¹⁵.

To examine (7), letting $x >$ maximal value in the pooled sample, the last component of the vector $F_{j+1}(x) - G_{j+1}(x)$, and its corresponding variance estimate would be used for inference purposes.

¹⁵If f and g were sampled in a panel, then the between distribution covariances also need to be included in the calculus.